

Pei Evaluation Service® is an accredited ISO Standard 17065 Product Certifier, accredited by the IAS. This **Product Evaluation Report** represents a product that **Pei ES** has Evaluated and has a Product Evaluation Service Agreement. This **Product Evaluation Report** in no way implies warranty for this product or relieves **Dupont de Nemours, Inc.** of their liabilities for this product. This **PER** is an official document if it is within one year of the initial or re-approval date.

Initial Approval
March, 2015

Re-Approved
March, 2020

See all **Pei ES** Listings at: www.p-e-i.com

Report Owner

DuPont de Nemours, Inc.
1501 Larkin Center Drive
200 Larkin Building
Midland, MI 48642

Approved Manufacturing Location

DuPont de Nemours, Inc.
901 E. Kankakee River Drive
Wilmington, Illinois 60481

Product

GREAT STUFF PRO™ CONSTRUCTION ADHESIVE Polyurethane Foam Adhesive

Evaluation Report Information

www.greatstuff.dupont.com
DOW Contact: 1-866-583-2583

General Details

GREAT STUFF PRO™ CONSTRUCTION Adhesive is used to bond to Oriented Strand Board (OSB), lumber, plywood, particleboard and drywall. **GREAT STUFF PRO™ CONSTRUCTION Adhesive** is manufactured at the approved manufacturing facility shown above. The approved manufacturing location has an approved SPU Quality Manual to manufacture this product and scheduled inspections by an accredited inspection agency.

Product Description

GREAT STUFF PRO™ CONSTRUCTION Adhesive is a single component moisture-cured polyurethane foam adhesive system. **GREAT STUFF PRO™ CONSTRUCTION Adhesive** can be used for interior applications. It is applied by inverting the can and spraying a 1/2-in bead of adhesive along the full length of each stud or joist. For applications where the sheathing materials are butted together two (2) 1/2-in beads can be dispensed side by side down the length of the sistered studs / joists or by placing a zig - zag pattern bead down the length of the sistered studs. If using mechanical fasteners for the application, they should be installed within 10 minutes after the bead has been laid. Adhesive bead application shall be in accordance with the manufacturer's installation instructions. This adhesive does not off-gas Formaldehyde into the air.

Containers and Storage

GREAT STUFF PRO™ CONSTRUCTION Adhesive is available in 26.5 oz. cans. **GREAT STUFF ALL PRO™ CONSTRUCTION Adhesive** should be applied in ambient temperature range between 32°F to 100°F. Storage of these containers should ensure that the containers are not punctured or stored at temperatures that exceed 120°F (49°C). Optimal storage temperature for this adhesive are between 65°F to 85°F with an approximate storage life of up to 12 months in these conditions.

General Product Use

The gypsum board being used shall meet ASTM C1396. Lumber shall be grade-marked and kiln dried. **GREAT STUFF PRO™ CONSTRUCTION Adhesive** should be applied in an ambient temperature range of 32°F to 100°F using a PRO Series foam dispensing gun. The substrate should be free of all contaminants such as loose dust, paint, liquids, oil, grease, etc. The substrates should be structurally sound and be free of snow, standing water, ice, dirt, oil and other agents that may cause failure to bond. **GREAT STUFF PRO™ CONSTRUCTION Adhesive** shall not be exposed to temperatures above 240°F. Make sure can is thoroughly shaken for at least 1 minute between uses to ensure an adequate bead. This product should not be used near heaters, furnaces, fireplaces, recessed lighting fixtures or other applications where foam could be susceptible to heat conducting surfaces.

Evaluation Criteria

1. **GREAT STUFF PRO™ CONSTRUCTION Adhesive** shall be installed according to [DuPont de Nemours, Inc.'s](#) Application Instructions. A copy of these instructions must be made easily available.
2. **GREAT STUFF PRO™ CONSTRUCTION Adhesive** is to be manufactured at [Dupont de Nemours, Inc.](#) approved plant following their approved Q.C. program with inspections by an accredited Third Party Inspection Agency.
3. The use of **GREAT STUFF PRO™ CONSTRUCTION Adhesive** in a fire rated assembly is not addressed in this Evaluation.
4. **GREAT STUFF PRO™ CONSTRUCTION Adhesive** is to be applied to bond lumber, plywood, particleboard and OSB.
5. Construction of assemblies using **GREAT STUFF PRO™ CONSTRUCTION Adhesive** adhering to Gypsum panels must meet the criteria as stated in section R702.3.1 of the 2018 International Residential Code.

Tested to

ASTM D3498-03 - Standard Specification for Adhesives for Field-Gluing Plywood to Lumber Framing for Floor Systems
ASTM D6464-03 - Standard Specification for Expandable Foam Adhesives for Fastening Gypsum Wallboard to Wood Framing

Building Code Compliance

2009 IRC - Section 702.3.1 - Gypsum board and gypsum panel product materials and accessories shall conform to ASTM C22, C475, C514, C1002, C1047, C1177, C1178, C1278, C1396 or C1658. Adhesives for the installation of gypsum board shall conform to the ASTM C557. This adhesive meets ASTM C557 with the difference of its unique application.

2012 IRC - Section 702.3.1 - All gypsum board materials and accessories shall conform to ASTM C22, C475, C514, C1002, C1047, C1177, C1178, C1278, C1396 or C1658 and shall be installed in accordance with the provisions of this section. Adhesives for the installation of gypsum board shall conform to the ASTM C557. This adhesive meets ASTM C557 with the difference of its unique application.

2015 IRC - Section 702.3.1 - Gypsum board and gypsum panel product materials and accessories shall conform to ASTM C22, C475, C514, C1002, C1047, C1177, C1178, C1278, C1396 or C1658. Adhesives for the installation of gypsum board shall conform to the ASTM C557. This adhesive meets ASTM C557 with the difference of its unique application.

2018 IRC - Section 702.3.1 - Gypsum board and gypsum panel product materials and accessories shall conform to ASTM C22, C475, C514, C1002, C1047, C1177, C1178, C1278, C1396, C1658 or C1766 and shall be installed in accordance with provisions of this section. Adhesives for the installation of gypsum board shall conform to the ASTM C557. This adhesive meets ASTM C557 with the difference of its unique application.

2009 & 2012 IBC - Section 2506.2 - Gypsum board materials shall conform to the appropriate standards listed in Table 2506.2 and Chapter 3.

2015 & 2018 IBC - Section 2506.2 - Gypsum board and gypsum panel products shall conform to the appropriate standards listed in Table 2506.2 and Chapter 35.

Table 1 - ASTM D3498 Adhesive Testing¹

Specimen	Test Method	Minimum Requirements	Average (psi)
Douglas Fir	Wet	150	233
Southern Pine	Wet	150	272
Douglas Fir	Frozen	100	511
Southern Pine	Frozen	100	491
Douglas Fir	Dry	150	420
Douglas Fir	Gap Filling	100	194
Douglas Fir	Moisture	150	346

Note:

1. No delamination, breakage or melting occurred with test specimens. The specimens passed oxidation and moisture resistance requirements

Table 2 - ASTM D6464 Adhesive Testing

Specimen	Test	Minimum Requirements	Results
Gypsum / PS-1 Plywood	24-Hour Shear	10 psi	86 psi
	14-Day Shear	40 psi	84 psi
	Shear Strength - Cyclic Exposure	32 psi	86 psi
	Static Load in Shear	No Bond Separation	Pass
Gypsum / Douglas Fir	Tensile - 24-Hour	25 psi	28 psi
Gypsum	Open Time	75% Paper Transfer	100% Paper Transfer
Plywood	Wetting Characteristics	Cohesion vs. Adhesion	Passed
Great Stuff Pro Wall & Floor Adhesive	Accelerated Aging	No Cracks / Breaking	Passed
	Freeze-Thaw Stability	10 psi	79 psi
Vinyl covered Gypsum	Compatability Test	No Blistering, discoloration or bond failure	Passed
	Staining Test	No Swelling / Discoloration	Passed
Gypsum / Douglas Fir	Bridging Characteristics	Intact Bond line	Passed

Product Documentation

A Product Evaluation Service Agreement between *Pei Evaluation Service*® and Dupont de Nemours, Inc.

SPU Quality Manual - Dated: August, 2019

A SDS for GREAT STUFF PRO Wall & Floor Polyurethane Foam Adhesive 26.5oz. HC ES GUN 12ct - Dated: October 15, 2018

Formaldehyde Opinion Letter - Dated: March 11, 2015

Test Standard Opinion Letter - Dated: March 13, 2014

Test Report No. 07-01A - ASTM D6464-03 Expandable Foam Adhesives for Fastening Gypsum Wallboard to Wood Framing - Dated May 18, 2007.

Test Report No. 07-01B - ASTM D3498-03 Adhesive Testing of Enerbond SF, Enerbond MH and Great Stuff Pro Wall & Floor Adhesive - Dated May 18, 2007.

Product Labeling

Each canister shipped of **GREAT STUFF PRO™ CONSTRUCTION Adhesive** that is covered by this **PER** must have a label attached with at least the following information:

- 1. DuPont de Nemours, Inc. Company Name and Address
- 2. Date of manufacture or Lot No.
- 3. Shelf life information
- 4. This **PER** Number & *Pei ES* Logo
- 5. Component name

Acceptable Evaluation Marks

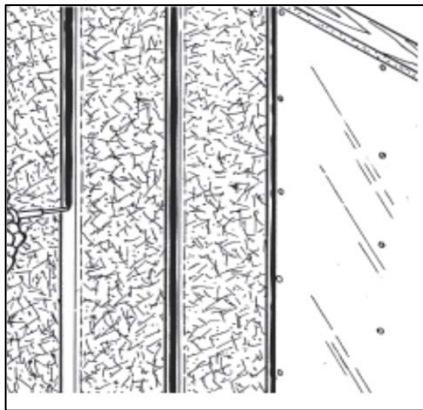


Figure 1 - Continuous bead application

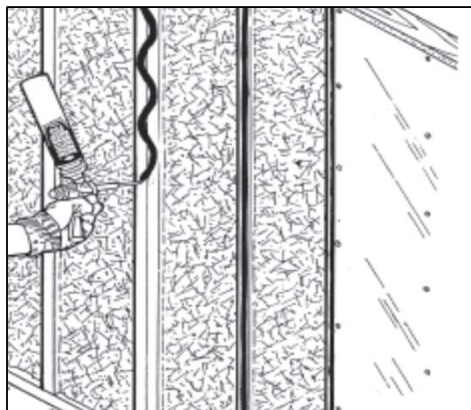


Figure 2 - Zig-Zag pattern application

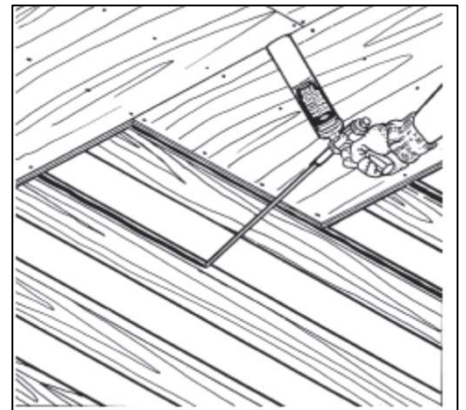


Figure 3 - Continuous bead Subfloor application



Figure 4 - 26.5oz Can



Figure 5 - Pro Series Gun with 26.5oz can application